

JB LIGHTING

P18 MK2

**1,100 W
PROFILE**

with framing module

The stage professional:
Just lighter, quieter and
more efficient!



Output
40,000
lumen

Zoom
6.5°-54°
(1:8.3)

only
28 dB(A)
extremely
quiet

only
32 kg
weight

1,100 W
white light
LED

Made in
GERMANY

...JUST BRILLIANT

The P18 Profile sets new standards! It really does!

The first generation, high performance P18 moving light defined a new standard in the performance characteristics of professional lighting. The new generation (MK2) of the P18 Profile sets the bar even higher – an excellent example of sustainable product development with the aim of always being one step ahead in terms of luminosity, precision and current energy efficiency.

With its 1,100 watt white light LED module it is even brighter and more brilliant, without even the slightest loss of its diverse effects, speed and performance – quite the opposite. Further development of the framing module now offers even more wide-ranging design possibilities. In addition, the two additional carrying handles mean it is now even more comfortable to handle the stage pro, which (only 32 kilos) is already very light and compact.

The features of the new P18 Profile leave nothing to be desired, e.g.:

- Zoom from 6.5°–54° (1:8.3)
- Framing module (rotatable by +/- 65°) with 4 blades, each blade can be rotated independently by +/- 28°
- 2 gobo wheels with 6 rotating and 8 static gobos
- Animation wheel, animation and sparkle effects
- 2 infinitely adjustable frost filters (soft edge/flood frost)
- 2 prisms (circular and linear)
- Infinitely adjustable high-speed iris
- Large light-emitting lens
- 4 carrying handles for easy handling
- Ultra-quiet 28 dB(A)
- Graphic display, electronically rotatable and with a battery backup
- Flicker-free operation, camera mode: 100 | 120 | 600 Hz and 3kHz

In addition, the P18 Profile HP (High Power) has:

- CMY color mixing unit and linear CTO
- 1 color wheel with 6 colors + High CRI filter

In addition, the P18 Profile HC (High CRI):

- CMY color mixing unit and linear CTO
- 1 color wheel with 7 colors

In addition, the P18 Profile WW (Warm White):

- CMY color mixing unit and linear CTB
- 1 color wheel with 7 colors

Find more information at: www.jb-lighting.de

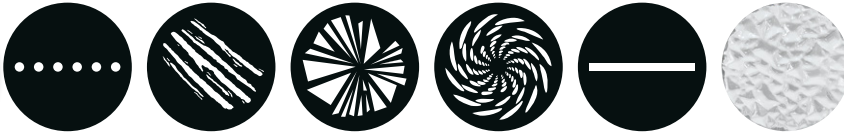


JB SLIDE-IN TECHNOLOGY

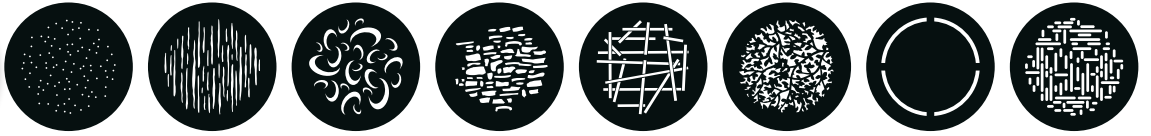
Cleaning and gobo changing are easy with the P18 Profile. All slide-ins can be removed without tools or manual cable disconnection.



6 rotating gobos



8 fixed gobos



6 brilliant colors



CMY + variable CT filter



P18 PROFILE SPECIFICATIONS

Overview of light colors and features



P18 HP



P18 HC

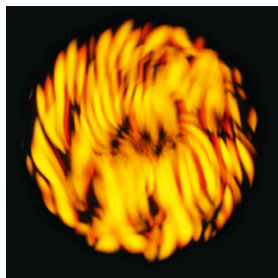


P18 WW

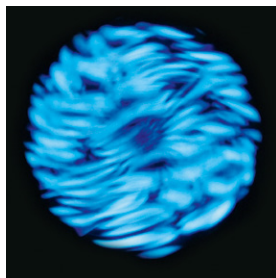
Specification:	HP – High Power	HC – High CRI	WW – Warm White
Color temperature:	6800 K	5800 K	3200 K
Luminosity:	72,000 lm (40,000 lm Output)	49,000 lm (28,500 lm Output)	42,000 lm (23,000 lm Output)
CRI:	≥70 (with CRI filter ≥85)	≥90	≥91
Correction filter:	linear CTO 6800 K to 2700 K	linear CTO 5800 K to 2500 K	linear CTB 3200 K to 6500 K
Usage:	Maximum luminous intensity for optimal illumination even from a great distance	Maximum light quality for optimal color reproduction with the best luminosity	Maximum comparability with conventional halogen lamps

ANIMATION WHEEL

The rotating animation wheel of the P18 Profile can be used to create vibrant motion effects.



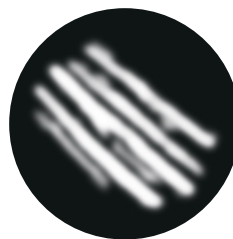
Fire effect



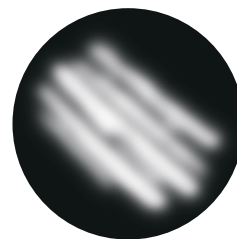
Water effect

FROST FILTERS

The seamlessly adjustable frost filters turn the P18 Profile into a versatile stage pro, that can also be used for wash effects.



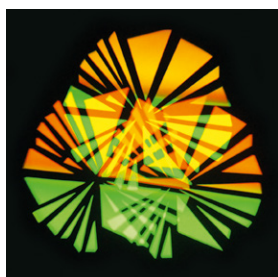
Soft edge



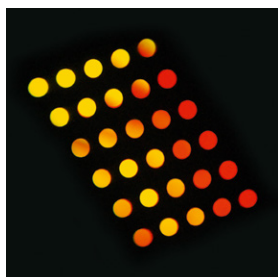
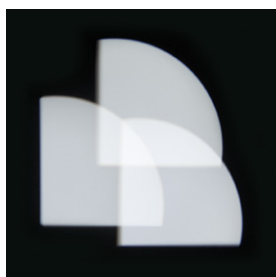
Flood frost

PRISMS

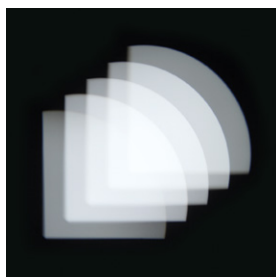
You can project spectacular and moving "images" by combining the gobos or the framing module with one of the two prisms.



3-section prism (circular)

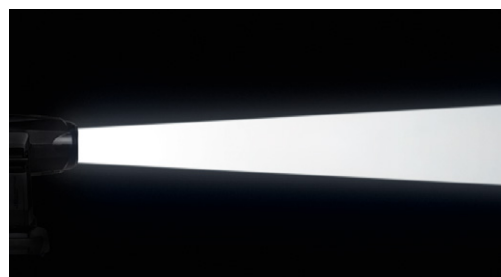


5-section prism (linear)

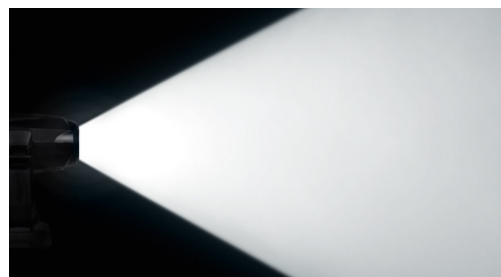


ZOOM RANGE (6.5 – 54°)

The optical system of the P18 Profile guarantees absolutely sharp and unvarying beams – regardless of light intensity and beam angle.



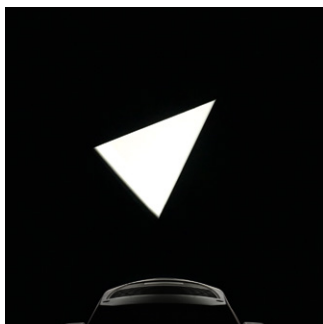
Minimum zoom (6.5°)



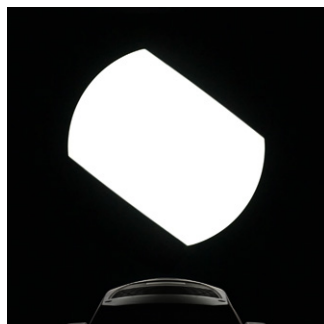
Maximum zoom (54°)

P18 PROFILE SPECIAL FEATURE: FRAMING MODULE

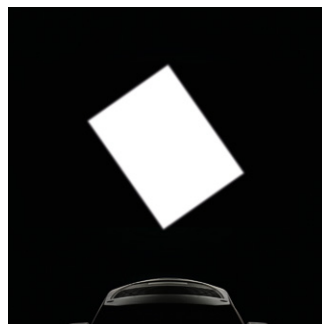
The new P18 Profile is equipped with a 130° rotatable framing module. Each blade can be adjusted independently in position and angle (+/- 28°). As a result, countless geometric shapes can be created quickly and precisely for targeted lighting or shading of objects and scenarios.



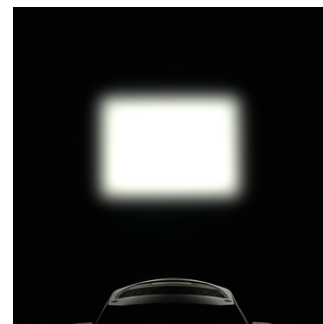
Individually controllable blades with variable angle (+/-28°) and position



A „total curtain“ effect made separately by each of the 4 blades, also exact parallel position possible



The framing module is rotatable by +/- 65°



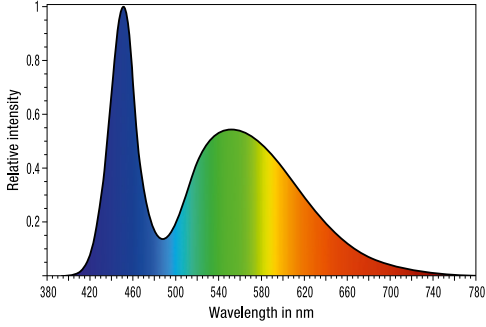
Frost filters create soft, perfectly homogeneous edges

PHOTOMETRIC DATA

P18 $\frac{HP}{P}$



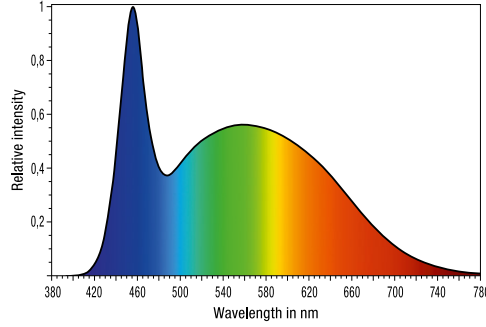
RELATIVE SPECTRAL DISTRIBUTION



P18 $\frac{H}{C}$



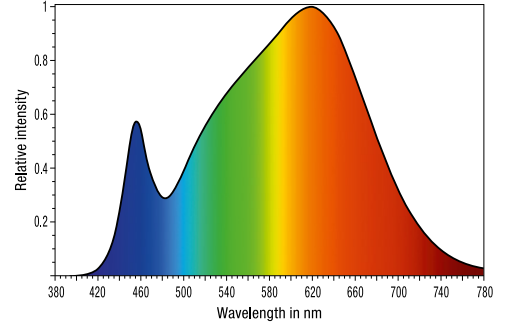
RELATIVE SPECTRAL DISTRIBUTION



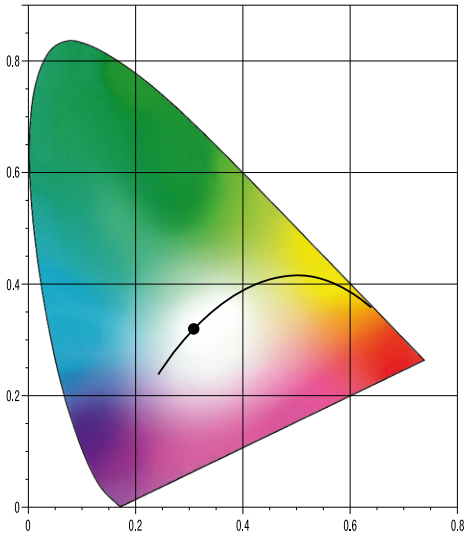
P18 $\frac{W}{W}$



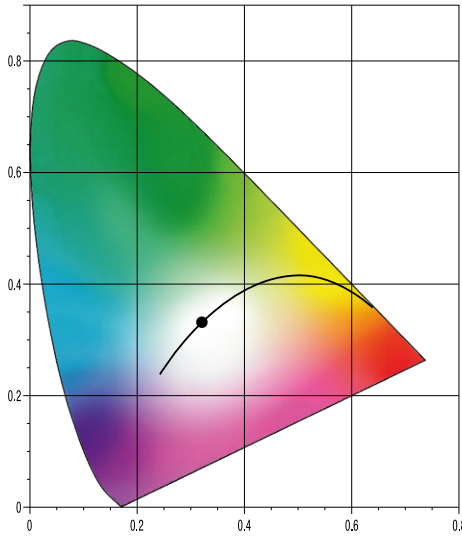
RELATIVE SPECTRAL DISTRIBUTION



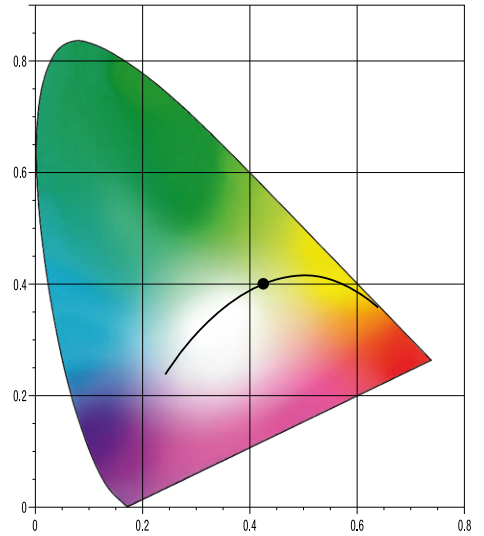
CHROMATICITY COORDINATES X,Y CIE 1931



CHROMATICITY COORDINATES X,Y CIE 1931

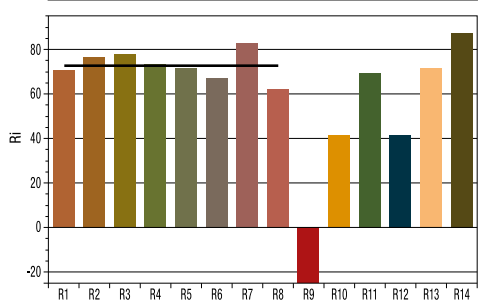


CHROMATICITY COORDINATES X,Y CIE 1931



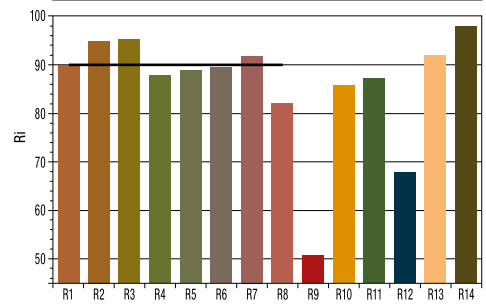
COLOR REPRODUCTION – CRI

R _a	R ₁	R ₂	R ₃	R ₄	R ₅	R ₆	R ₇	R ₈	R ₉	R ₁₀	R ₁₁	R ₁₂	R ₁₃	R ₁₄
72.8	70.6	76.6	77.7	73.5	71.6	67.1	82.7	62.5	-25.6	41.4	69.3	41.6	71.5	87.3



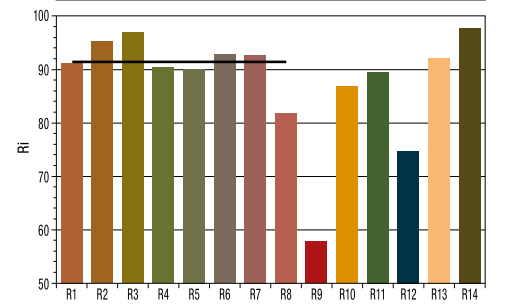
COLOR REPRODUCTION – CRI

R _a	R ₁	R ₂	R ₃	R ₄	R ₅	R ₆	R ₇	R ₈	R ₉	R ₁₀	R ₁₁	R ₁₂	R ₁₃	R ₁₄
90.0	89.9	95.0	95.3	87.8	88.8	89.6	91.9	82.0	50.8	85.8	87.2	67.8	92.0	97.8



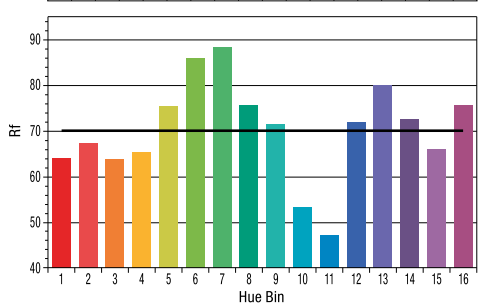
COLOR REPRODUCTION – CRI

R _a	R ₁	R ₂	R ₃	R ₄	R ₅	R ₆	R ₇	R ₈	R ₉	R ₁₀	R ₁₁	R ₁₂	R ₁₃	R ₁₄
91.4	91.2	95.1	96.9	90.3	90.2	92.6	82.0	57.9	86.8	89.5	74.8	92.2	97.7	



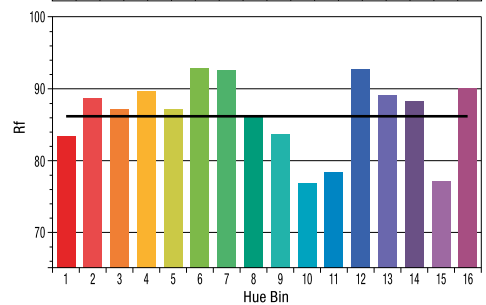
COLOR REPRODUCTION – TM-30-15

R _f	1	2	3	4	5	6	7	8	9	10	11	12	13	14	15	16	R _g
70.1	64.3	67.5	63.8	65.4	75.5	86.0	88.3	75.7	71.5	53.3	47.3	71.9	79.9	72.6	66.0	75.7	93.3



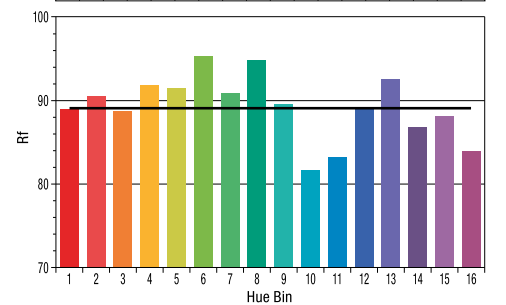
COLOR REPRODUCTION – TM-30-15

R _f	1	2	3	4	5	6	7	8	9	10	11	12	13	14	15	16	R _g
86.2	83.5	88.7	87.2	89.7	87.2	93.0	92.7	86.2	83.7	76.8	78.4	92.8	89.1	88.3	77.1	90.1	96.9



COLOR REPRODUCTION – TM-30-15

R _f	1	2	3	4	5	6	7	8	9	10	11	12	13	14	15	16	R _g
89.1	88.9	90.5	88.6	91.9	91.6	95.4	90.8	94.9	89.5	81.8	83.2	88.9	92.5	86.9	88.1	83.9	98.3



Technical specifications:

Optics and light source

- 1,100 W white light LED module
HP (High Power): 6800 K; 72,000 lm (40,000 lm Output); CRI \geq 70
HC (High CRI): 5800 K; 49,000 lm (28,500 lm Output); CRI \geq 90
WW (Warm White): 3200 K; 42,000 lm (23,000 lm Output); CRI \geq 91
- > 20,000 h life time
- Flicker-free operation, camera mode: 100, 120, 600 Hz and 3 kHz
- Zoom range: 6.5° – 54° (1:8.3)

Effects

- 1 gobo wheel with 8 static, interchangeable gobos + open
- 1 gobo wheel with 6 rotate-, position- and interchangeable gobos + open
- CMY color mixing unit for rapid, even color mixing + linear CTO (P18 HP and P18 HC) and linear CTB (P18 WW) respectively
- P18 HP: 1 color wheel with 6 full and half colors + open and linear color selection + High CRI filter
- P18 HC and WW: 1 color wheel with 7 full and half colors + open and linear color selection
- Framing module with 4 blades – each fully closing and with separate motion and rotation control, the module can be rotated by 130° (+/- 65°), each blade independently by +/- 28°
- Motorised infinitely adjustable high-speed iris with 18 fins
- 2 prisms, linear and circular, rotate- and indexable
- 2 frost filters (soft edge/flood frost), continuously variable – optional further frost stages possible
- Electronic dimmer 0% –100%
- Electronic shutter with preprogrammed puls- and ramp functions
- Animation effect / animation wheel / Sparkle effect
- Focus system with auto focus function
- Zoom range: 6.5° –54° (1:8.3)

Movement

- 3 phase extra strong stepping motors
- Precise, very fast and silent movement
- 540° pan / 280° tilt

Control and programming

- USITT DMX-512, RDM
- Ethernet interface with Art-Net and sACN
- Wireless DMX / RDM Lumen Radio CRMX TiMo
- LCD display with function keys and battery buffer, electronically rotatable
- Mini USB for software update
- Stand-alone mode, master/slave function
- Built-in DMX analyser

Construction

- Original JB-Lighting slide-in module technology
- Rugged construction
- Transport lock for pan/tilt
- Fan control for almost noiseless operation, 28 dB(A)
- Neutrik 5pin XLR IN/OUT
- Neutrik etherCON IN/OUT
- Neutrik powerCON TRUE1 IN/OUT

Rigging

- 2 Omega brackets with Original Camloc® fasteners for quick and convenient installation with four different fastening options

Electrical specification

- Max. power consumption 1,500 VA
- Input voltage range 100V–240V, 50/60 Hz

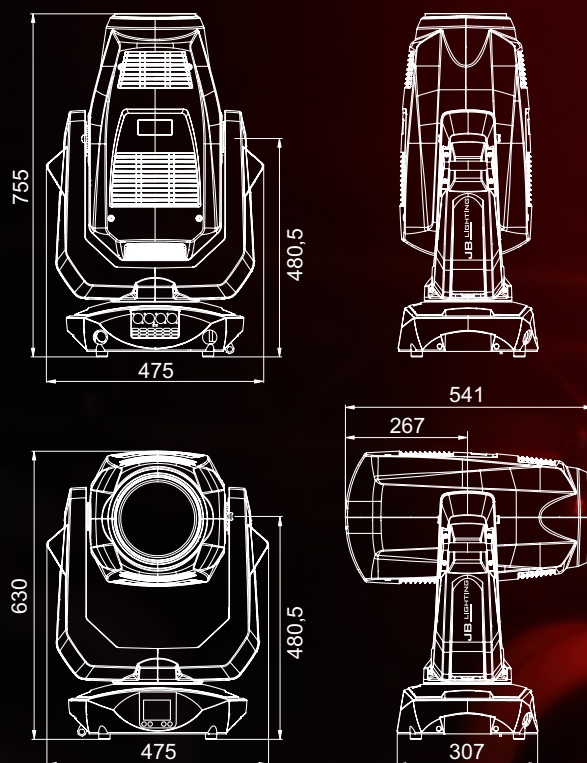
Mechanical specifications

- Dimensions: W 475 x H 755 x D 307 mm
- Weight: 32 kg

Scope of delivery

- Schuko on powerCON TRUE1, flexible rubber cable (2 m long, 3 x 1.5 mm²)
- 2 Omega brackets

Dimensions:



Accessories:

- **Lens hood** (Code JBK0315)
- **AMPTOWN single** (Code CASE31)
 - with SiP foam inlet, stacking troughs and a scan window
 - Dimensions: W 60 x D 58 x H 86 cm
 - Weight without (incl. fixtures): approx. 48 (80) kg
- **AMPTOWN double** (Code CASE32)
 - with SiP foam inlet, stacking troughs and a scan window
 - Dimensions: W 120 x D 58 x H 86 cm
 - Weight without (incl. fixtures): approx. 74 (138) kg



JB LIGHTING

JB-Lighting Lichtenlagentechnik GmbH
Sallersteig 15 · D-89134 Blaustein · Tel. +49 (0)7304 9617-0
E-Mail: info@jb-lighting.de · www.jb-lighting.de