

**JB LIGHTING**

# M18

## 1,200 W PROFILE

with multispectral LED

The versatile color marvel  
with terrific luminosity  
and intensity!



**Output**  
**30,000**  
lumen at  
7000 K

**Zoom**  
**6.5°-54°**  
(1:8.3)

**only**  
**28 dB(A)**  
extremely  
quiet

**only**  
**32 kg**  
weight

**CRI**  
**96**

**1,200 W**  
multispectral  
LED

**Made in**  
**GERMANY**

...JUST BRILLIANT



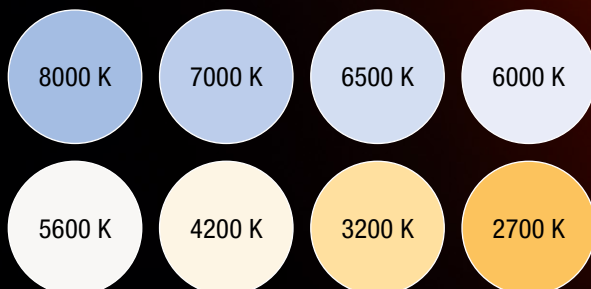
# M18 Profile: More color. More flexibility. More possibilities in lighting design.

The M18 is a profile spotlight with 1,200 Watt multispectral LED, framing module and zoom range of 6.5° – 54°, specially developed for color-intensive applications, e.g. in the areas of theater, opera, drama, TV and trade fair. Thanks to the enormous luminosity, e.g. from 28,000 lm output at 5600 K, the M18 Profile ensures incredibly colorful light projections even from a greater distance. The M18 Profile carries out its work exceptionally quietly, extremely precisely and entirely flicker-free – as is to be expected of a product from JB.

The M18 Profile is shipped from the factory with pre-programmed white, color or pastel tones, but the possibilities here are almost unlimited. The basic color temperature can be continuously adjusted from 2000 – 12,000 K and flexibly adjusted at any time, e.g. to 3200 K (CRI 96), if particular value is placed on absolutely natural skin tones. In addition, thanks to multispectral, additive color mixing, colors are reproduced in a variety and brilliance that is simply impressive. The 14 gobos are distributed over two gobo wheels. They were specially assembled and partially redesigned for the most multifaceted projection of backgrounds, patterns and structures. Furthermore, the M18 has two stepless frost filters, two rotating prisms and an animation wheel that can be rotated endlessly and seamlessly.

## The M18 Profile is a true color marvel with features including:

- Zoom from 6.5°–54° (1:8.3)
- CMY, RGB and RGBAL color mixing
- Framing module (rotatable by +/- 65°) with 4 blades, each blade can be rotated independently by +/- 30°
- 1 gobo wheel with 6 rotating gobos
- 1 gobo wheel with 8 static gobos
- 2 infinitely adjustable frost filters
- Adjustable +/- green shift
- 2 prisms (3-facet circular and 5-facet linear)
- Infinitely adjustable high-speed iris
- Final and infinitely rotating animation wheel for water and fire effects
- Graphic display, electronically rotatable and with a battery backup
- Flicker-free operation, camera mode: 100, 120 and 600 Hz
- Convenient to use thanks to 32 kg weight and 4 carrying handles
- Pan/tilt travel limitation configured
- Large light-emitting lens
- Ultra-quiet 28 dB(A)
- The white light color temperature is seamlessly adjustable from 2000 to 12,000 Kelvin

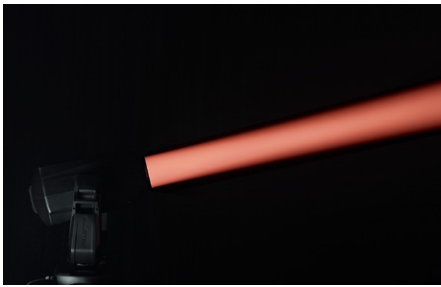


Find more information at:  
[www.jb-lighting.de](http://www.jb-lighting.de)

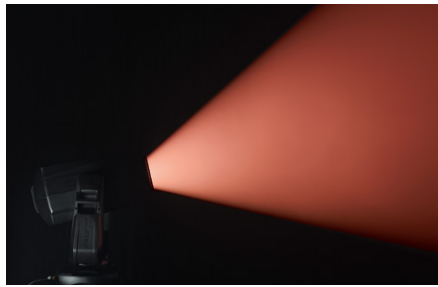


## ZOOM RANGE & FROST FILTERS

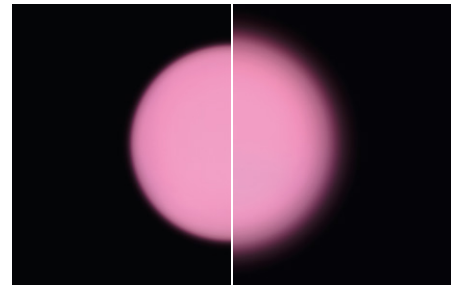
The M18 Profile enables absolutely sharp and homogeneous beams from 6.5° - 54°. If necessary, for example, for wash applications, two stepless frost filters are available, with which extremely homogeneous blurring can be created.



Minimum zoom (6.5°)



Maximum zoom (54°)

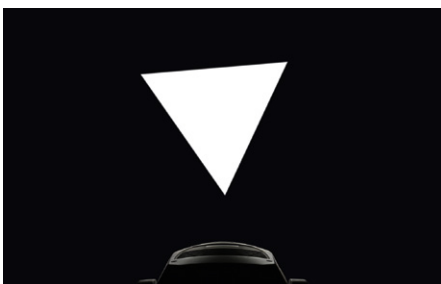


Soft edge, 1°

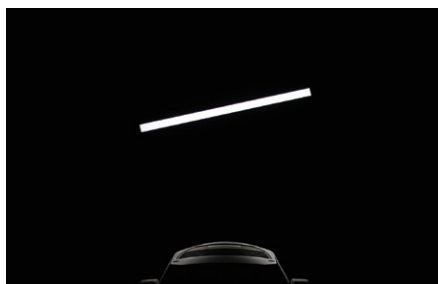
Flood frost, 5°

## M18 PROFILE – THEATRE FRAMING MODULE

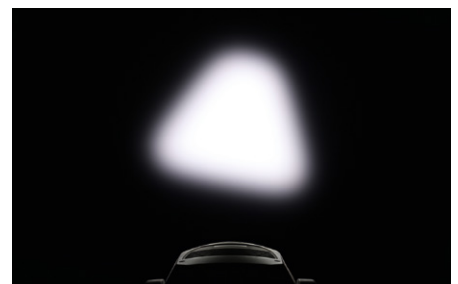
The M18 Profile is equipped with a special theatre framing blades with short apertures, which enable very high setting angles combined with minimal light loss. Each blade can be independently adjusted in position and angle and can be inserted over almost the entire usable range with the maximum angle of +/- 30°. An advantage that allows you to work much faster, more precisely and more flexibly and makes it much easier to deflect extreme lighting angles.



Each individual blade can be continuously rotated (+/-30°) and freely positioned



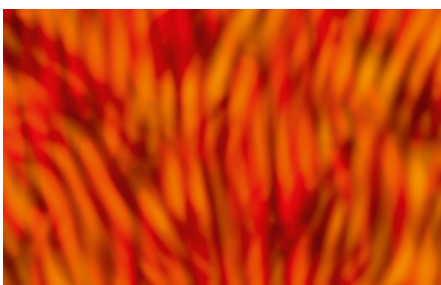
The four blades can be positioned precisely parallel or at right angles to each other



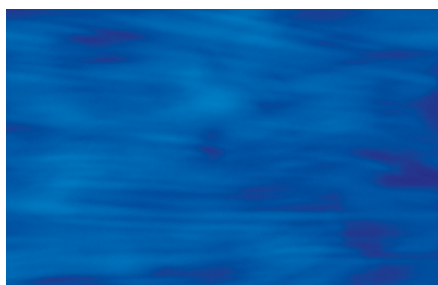
The framing module can be continuously rotated +/- 65° and combined with the frost filters

## ANIMATION WHEEL & PRISMS

Combine the gobos of the M18 Profile with the endlessly rotating animation wheel to create outstanding fire and water effects with various dynamics. The M18 is also equipped with two prisms (3-facet circular and 5-facet linear), which add even greater pattern variety and movement to the stage design.



Fire effect



Water effect



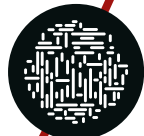
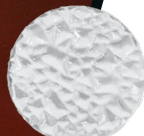
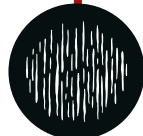
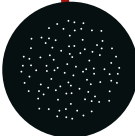
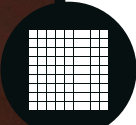
Triangular gobo with 3-facet prism





**6**  
rotating  
gobos

**8**  
fixed  
gobos



**1**  
animation  
wheel

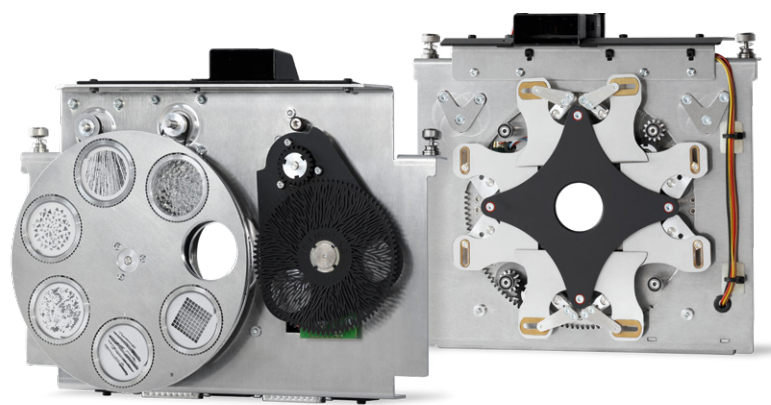


### OPTIONAL: TRAVEL LIMITATION

The maximum range of motion of the M18 Profile of 540° Pan / 280° Tilt can be mechanically limited individually if required. For this purpose, new start and end points for the pan and/or tilt movements are defined with the help of the path limiter (accessory) – corresponding devices are available at the factory.



After installing the mechanical travel limiter and subsequent "limit" reset, the new, limited range of motion is also logged by the software and automatically taken into account in future resets.



### JB SLIDE-IN TECHNOLOGY

Cleaning and gobo changing are easy. All slide-ins can be removed without tools or manual cable disconnection.

## PHOTOMETRIC DATA

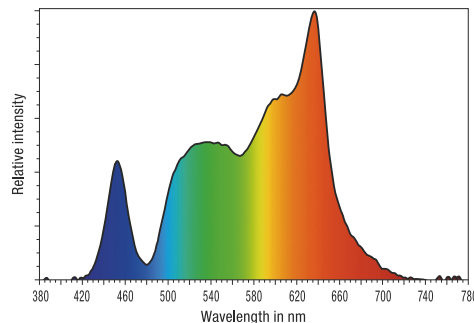
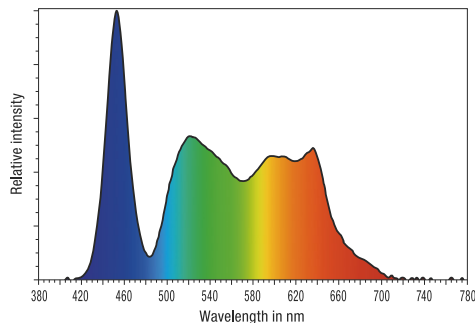
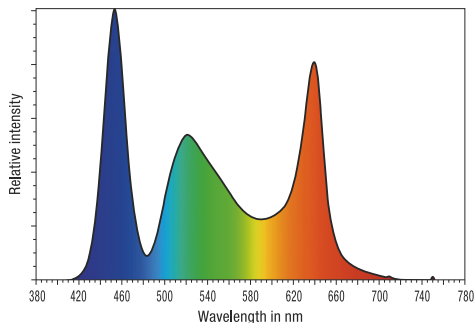
With the M18 Profile, the basic color temperature can be set individually from 2000 – 12,000 K. In addition, thanks to the multispectral LED module with 5 colors (RGB+Amber+Lime), the color space that can be displayed is larger than with RGBW LEDs and the colors are significantly stronger.



**7000 K color temperature ( $\pm$ HP)**  
30.000 lm Output, CRI 78

**5600 K color temperature ( $\pm$ HC)**  
28.000 lm Output, CRI 93

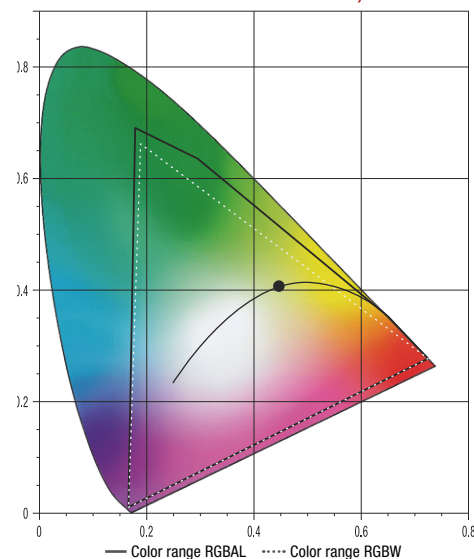
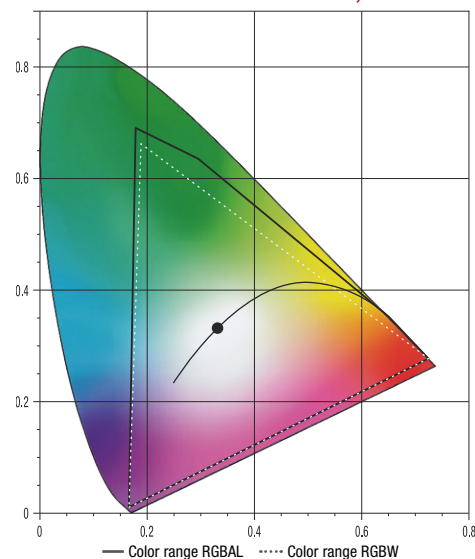
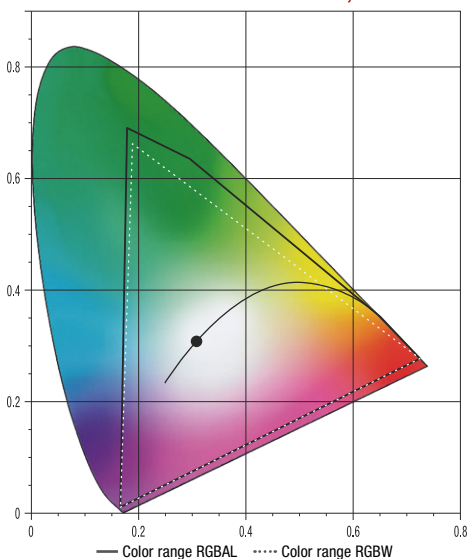
**3200 K color temperature ( $\pm$ WW)**  
22.000 lm Output, CRI 96



**CHROMATICITY COORDINATES X,Y CIE 1931**

**CHROMATICITY COORDINATES X,Y CIE 1931**

**CHROMATICITY COORDINATES X,Y CIE 1931**



**COLOR REPRODUCTION – CRI**

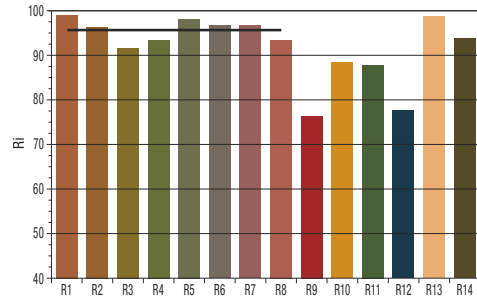
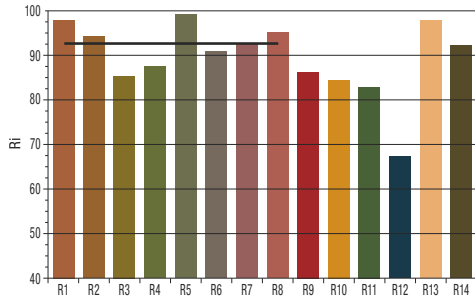
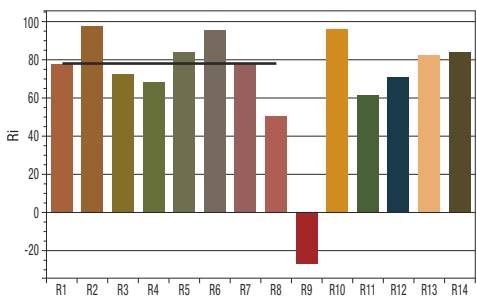
**COLOR REPRODUCTION – CRI**

**COLOR REPRODUCTION – CRI**

R <sub>A</sub>	R1	R2	R3	R4	R5	R6	R7	R8	R9	R10	R11	R12	R13	R14
78.1	77.8	97.7	72.3	68.3	84.0	95.8	78.0	50.6	-26.4	96.0	61.6	70.7	82.5	83.9

R <sub>A</sub>	R1	R2	R3	R4	R5	R6	R7	R8	R9	R10	R11	R12	R13	R14
92.8	97.8	94.3	85.3	87.5	99.0	90.7	92.8	95.0	86.3	84.4	83.1	67.5	97.8	91.9

R <sub>A</sub>	R1	R2	R3	R4	R5	R6	R7	R8	R9	R10	R11	R12	R13	R14
95.7	99.1	96.4	91.2	93.2	98.1	96.6	96.5	93.2	76.5	88.4	87.8	77.9	98.8	93.9



**COLOR REPRODUCTION – TM-30-15**

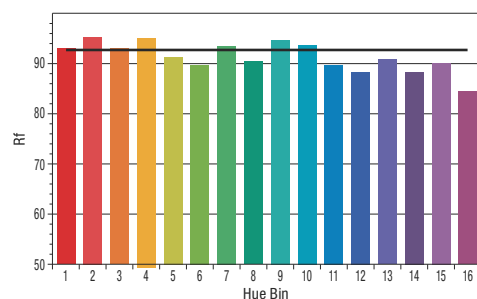
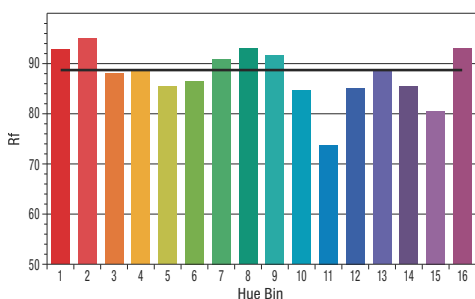
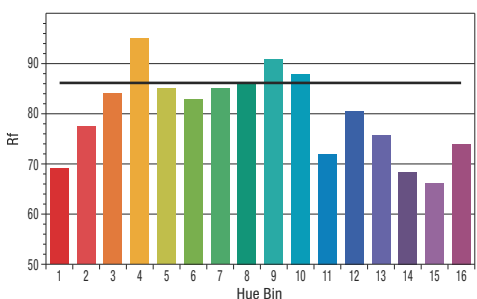
**COLOR REPRODUCTION – TM-30-15**

**COLOR REPRODUCTION – TM-30-15**

R <sub>e</sub>	1	2	3	4	5	6	7	8	9	10	11	12	13	14	15	16	R <sub>e</sub>
83.3	69.3	78.7	84.0	94.6	84.8	83.0	84.8	86.0	90.9	88.1	72.0	80.6	75.8	68.3	66.1	74.1	113.1

R <sub>e</sub>	1	2	3	4	5	6	7	8	9	10	11	12	13	14	15	16	R <sub>e</sub>
88.8	92.7	95.2	88.2	88.8	86.4	86.4	91.0	93.3	91.8	84.6	73.9	85.6	88.7	85.9	80.5	93.4	102.2

R <sub>e</sub>	1	2	3	4	5	6	7	8	9	10	11	12	13	14	15	16	R <sub>e</sub>
92.6	92.9	95.6	93.0	95.4	91.5	89.5	93.4	90.4	94.8	93.8	89.3	88.4	90.8	88.4	90.1	84.3	102.9





## Technische Spezifikationen:

### Optics and light source

- 1,200 W RGBAL LED module
- 30.000 lm Output at 7000 K
- > 20,000 h life time
- Flicker-free operation, camera mode: 100, 120 and 600 Hz
- Zoom range: 6.5° – 54° (1:8.3)

### Effects

- 1 gobo wheel with 8 static, interchangeable gobos + open
- 1 gobo wheel with 6 rotate-, position- and interchangeable gobos + open
- CMY, RGB and RGBAL color mixing
- CRI infinitely adjustable;  $\leq 96$
- The white light color temperature is seamlessly adjustable from 2000 to 12,000 Kelvin
- Adjustable +/- green shift
- Framing module with 4 blades – each with separate motion and rotation control, the module can be rotated by 130° (+/- 65°), each blade independently by +/- 30°
- Endlessly rotating animation wheel for water and fire effects
- Motorised infinitely adjustable high-speed iris with 18 fins
- 1 prism, 3-facet circular, rotate- and indexable
- 1 prism, 5-facet linear, rotate- and indexable
- 2 frost filters (soft edge/flood frost), continuously variable – optional further frost stages possible
- Electronic dimmer 0%–100%
- Electronic shutter with preprogrammed puls- and ramp functions
- Focus system with auto focus function
- Zoom range: 6.5°–54° (1:8.3)

### Movement

- 3 phase extra strong stepping motors
- Precise, very fast and silent movement
- 540° pan / 280° tilt

### Control and programming

- USITT DMX-512, RDM
- Ethernet interface with Art-Net and sACN
- Wireless DMX / RDM Lumen Radio CRMX TiMo
- LCD display with function keys and battery buffer, electronically rotatable
- Mini USB for software update
- Stand-alone mode, master/slave function
- Built-in DMX analyser

### Construction

- Original JB-Lighting slide-in module technology
- Rugged construction
- Transport lock for pan/tilt
- Travel limiter configured
- Fan control for almost noiseless operation, 28 dB(A)
- Neutrik 5pin XLR IN/OUT
- Neutrik etherCON IN/OUT
- Neutrik powerCON TRUE1 IN/OUT

### Rigging

- 2 Omega brackets with Original Camloc® fasteners for quick and convenient installation with four different fastening options

### Electrical specification

- Max. power consumption 1,600 VA
- Input voltage range 100V–240V, 50/60 Hz

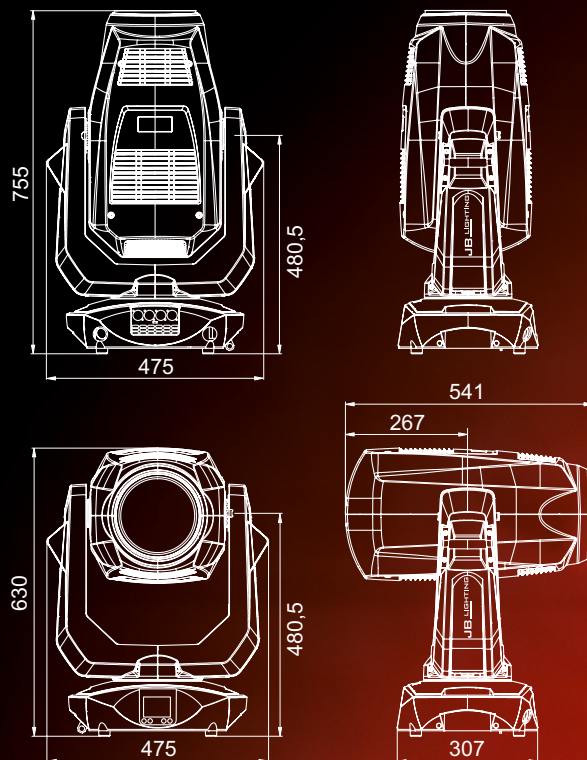
### Mechanical specifications

- Dimensions: W 475 x H 755 x D 307 mm
- Weight: 32 kg

### Scope of delivery

- Schuko on powerCON TRUE1, flexible rubber cable (2m long, 3 x 1.5 mm<sup>2</sup>)
- 2 Omega brackets

## Dimensions:



### Accessories:

- **Travel limitation** (Code ZU0029)
- **Lens hood** (Code JBK0315)
- **AMPTOWN single** (Code CASE44)
  - with SIP foam inlet, stacking troughs and scan window
  - Dimensions: W 60 x D 58 x H 86 cm
  - Weight without (incl. fixtures): approx. 48 (80) kg
- **AMPTOWN double** (Code CASE45)
  - with SIP foam inlet, stacking troughs and scan window
  - Dimensions: W 120 x D 58 x H 86 cm
  - Weight without (incl. fixtures): approx. 74 (138) kg



# JB LIGHTING

JB-Lighting Lichtenlagentechnik GmbH  
Sallersteig 15 · D-89134 Blaustein · Tel. +49 (0)7304 9617-0  
E-Mail: info@jb-lighting.de · [www.jb-lighting.de](http://www.jb-lighting.de)